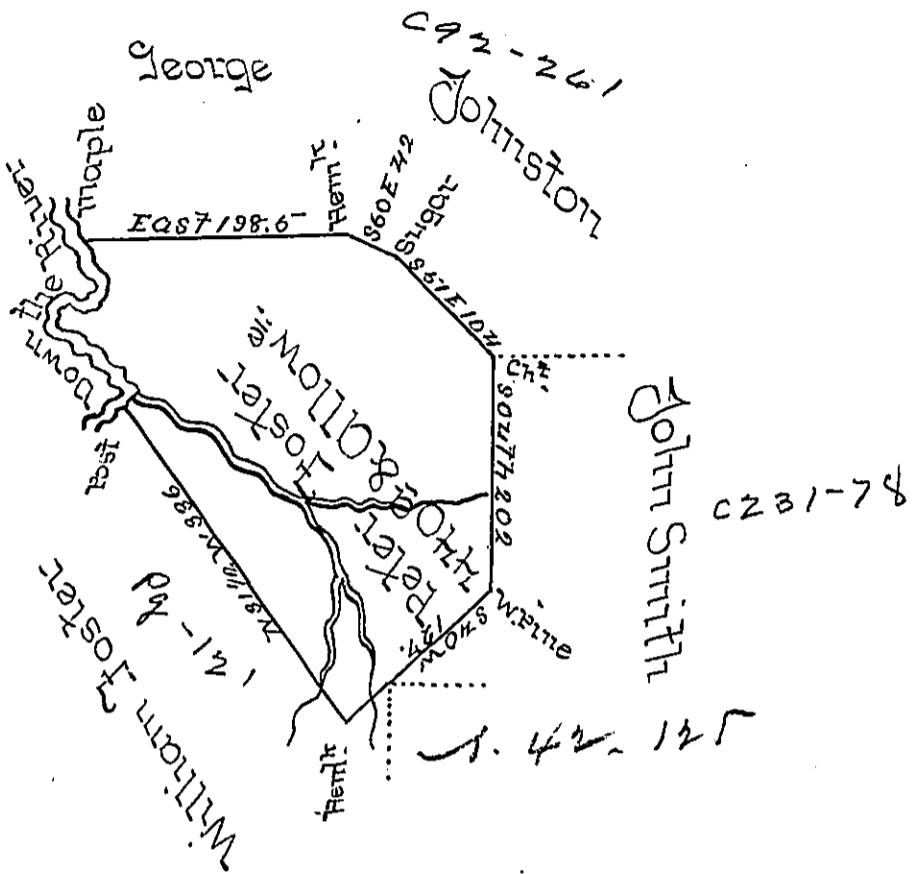


Course and Distance
from the Post Down to
the Maple

- N 7 W — 24.2
- N 32 W — 17
- WEST — 16.6
- S 47 W — 20
- S 76 W — .8
- N 12 W — .5
- N 36 E — 16
- N 17 E — 17
- N 15 W — 18



Draught of a Tract of Land situate in Bell Township Clear-
field County containing Four Hundred and Forty Acres
and the usual Allowance of Six per Cent for Roads &c. Sur-
veyed the 21st Day of May 1835 in Pursuance of a War-
rant granted to Peter Foster Dated the 18th Day of Decem-
ber 1793 for 400 Acres

David Ferguson D.S.

To Jacob Spangler Esq }
Surveyor General }

IN TESTIMONY that the above is a copy of the original remaining on file in
the Department of Internal Affairs of Pennsylvania, made
conformably to an Act of Assembly approved the 16th day of
February, 1833, I have hereunto set my Hand and caused
the Seal of said Department to be affixed at Harrisburg,
this 5th day of July 1898

James W. Pitta
Secretary of Internal Affairs.